

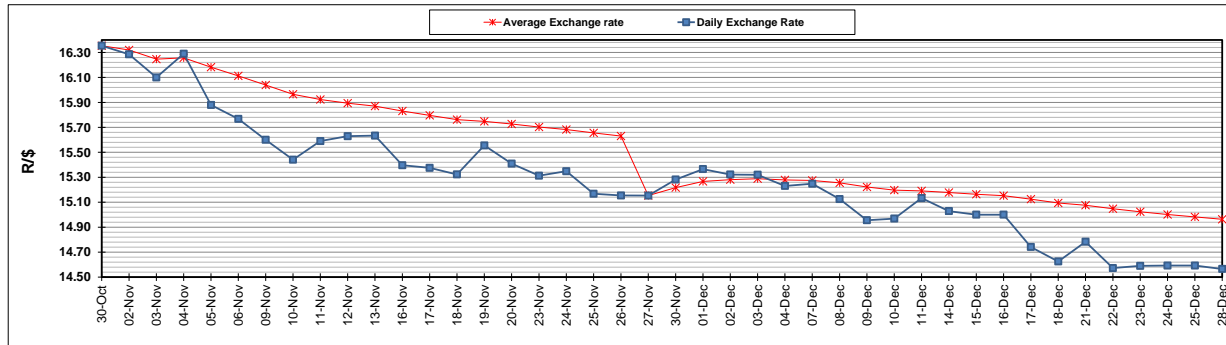
	PETROL 95 ULP	PETROL 93 ULP & LRP	DIESEL 0.05%	DIESEL 0.005%	ILL. PAR.
GAUTENG PUMP PRICE (SA c/l) AS FROM 02/12/2020	1,446.000	1,426.000	-	-	-
WHOLESALE PRICE (SA c/l) AS FROM 02/12/2020	-	-	1,245.420	1,247.820	684.688
SINGLE NATIONAL MAXIMUM RETAIL PRICE	-	-	-	-	856.000
BASIC FUEL PRICE - 28/12/2020 (SA c/l)	528.977	518.935	544.219	547.110	530.285
PRESS RELEASE CONTRIBUTION TO BFP 02/12/2020 - 28/12/2020 (SA c/l)	479.170	469.170	486.630	489.030	472.128
UNIT OVER/(UNDER) RECOVERY - 28/12/2020 (SA c/l)	(49.807)	(49.765)	(57.589)	(58.080)	(58.157)
AVERAGE BASIC FUEL PRICE 27/11/2020 - 28/12/2020	521.498	514.928	539.399	541.019	524.111
AVERAGE UNIT OVER/(UNDER) RECOVERY 27/11/2020 - 28/12/2020	(38.605)	(42.035)	(54.405)	(53.625)	(54.847)

ANALYSIS MOVEMENT OF AVERAGE OVER/(UNDER) RECOVERY

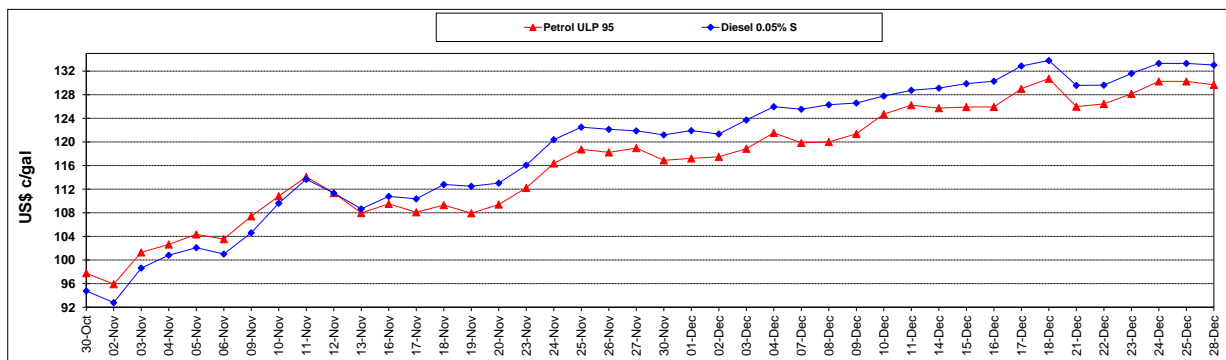
	PETROL 95	PETROL 93	DIESEL 0.05%	DIESEL 0.005%	ILL. PAR.
- MOVEMENT IN INTERNATIONAL PRODUCT PRICES	(61.854)	(64.992)	(78.453)	(77.745)	(78.213)
- MOVEMENT IN EXCHANGE RATE	23.249	22.957	24.048	24.120	23.366
AVERAGE UNIT OVER/(UNDER) RECOVERY 27/11/2020 - 28/12/2020	(38.605)	(42.035)	(54.405)	(53.625)	(54.847)

R/\$ EXCHANGE RATE - (R/\$14.5650 - 28/12/2020)

EXCHANGE RATE USED IN BASIC FUEL PRICE



INTERNATIONAL PRODUCT PRICES OF BASKET USED IN BASIC FUEL PRICE



BASIC FUEL PRICE IN SA CENTS PER LITRE

